

Music Educators of Berks County

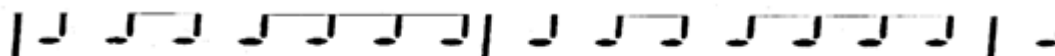
2017-2018 Jr. County Orchestra Audition Solos (LIST A)

<u>Instrument</u>	<u>Selection</u>	<u>Comp./Arr.</u>	<u>Book/Collection</u>	<u>Publisher</u>
Violin	Sonatina - Page 13	Breval	Solo Time for Strings - Book 4	Forrest Etling
Viola	Sonatina - Page 13	Breval	Solo Time for Strings - Book 4	Forrest Etling
Cello	Air Varie - Page 12	deBeriot	Solo Time for Strings - Book 4	Forrest Etling
String Bass	Introduction & Dance	Scarmolin- A. Lewis	<u>Book/Collection</u>	Ludwig Music Co.

Jr. County Orchestra Scale Requirements

DIATONIC SCALES FOR STRINGS (ALL SCALES MUST BE MEMORIZED)

Played at a minimum speed of MM quarter note = 100, separate bow, using the rhythmic pattern shown below.



<u>Instrument</u>	<u>Scales with octaves to be played</u>	<u>Chromatic</u>
Violin	C, A, D, G, Bb, Eb: 2 Octaves.....F: 1 Octave	NONE REQUIRED
Viola	C, D, G, F, Eb: 2 Octaves.....Bb, A: 1 Octave	NONE REQUIRED
Cello	C, D, G, F, Eb: 2 Octaves.....Bb, A: 1 Octave	NONE REQUIRED
String Bass	F, G: 2 Octaves.....C, Bb, Eb, D, A: 1 Octave	NONE REQUIRED

UPDATED: 06.15.17 URL: http://www.berksmusic.com/1718_jrcoorchsolos.pdf

[To Jr. Co. Band](#) [To Jr. Co. Orchestra](#) [To Main Menu](#) [Directors w/ Orchestra questions?](#)